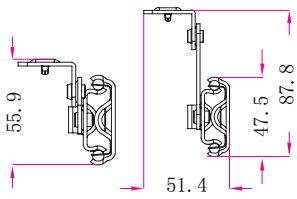


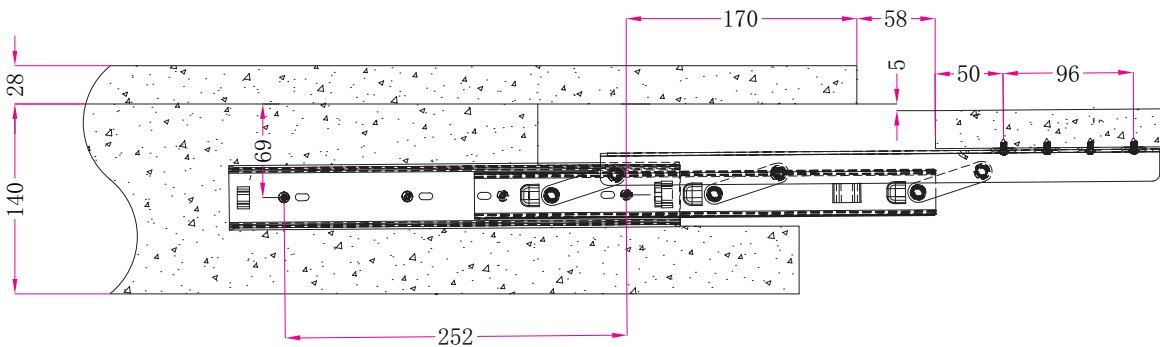
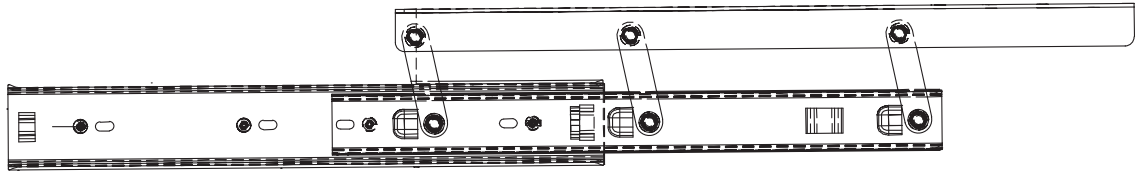
**SERIE 98**
**KG 60** | **60.000** | **48**


## CARATTERISTICHE TECNICHE

- Materiale: acc. lamin. a freddo
- Cuscinetti a sfere in acciaio al carbonio
- Finitura: zincato brillante / nero
- Spessore top tavolo: max 30 mm

## TECHNICAL SPECIFICATIONS

- Material: cold rolled steel
- Carbon steel ball bearings
- Finishing: bright zinc-coated / black
- Table top thickness: 30 mm max



CODE	Slide length	Extension	PAIR Kg.	CARTON Kg.	CARTON PAIR
98350	350	300	2.00	24.40	12
98400	400	340	2.20	26.90	12
98480	480	400	2.46	30.20	12